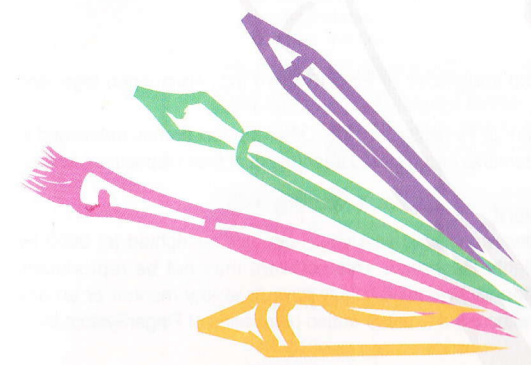




User's Guide

User's Guide

Contents



abc 計
ナカ 國なる



The next generation Digital pen



Code No-0040001



Thank You

Thank you for purchasing the *i*-pen Mouse. You have made an excellent choice for your next digital input device. *i*-pen Mouse is designed to be used for many functions with ease.

Trademarks

The following are registered trademarks of FingerSystem Inc.: *i*-pen, *i*-pen logo, and FingerSystem logo.

FingerSystem is a trademark of FingerSystem Inc. Other product names mentioned in this guide may also be trademarks or registered trademarks of their respective owners.

Proprietary Statement

The digitally encoded software included with your *i*-pen is Copyrighted (c) 2003 by FingerSystem Inc. All Rights Reserved. This software may not be reproduced, modified, displayed, transferred, or copied in any form or in any manner or on any media, in whole or in part, without the express written permission of FingerSystem Inc.

Copyright Notice

This manual is Copyrighted (c) 2003 by FingerSystem U.S.A., Inc., 9237 Eton Ave., Chatsworth, CA 91311. All Rights Reserved. This document may not be copied, in whole or part, not transferred to any other media or language, without written permission of FingerSystem U.S.A., Inc.

Manual Notice

FingerSystem U.S.A., Inc. reserves the right to make changes to this manual and to the equipment described herein without notice. Considerable effort has been made to ensure that this manual is free of inaccuracies and omissions. However, FingerSystem U.S.A., Inc. makes no warranty of any kind including, but not limited to, any implied warranties of merchantability and fitness for a particular purpose with regard to this manual. FingerSystem U.S.A., Inc. assumes no responsibility for, or liability for, errors contained in this manual or for incidental, special, or consequential damages arising out of the furnishing of this manual, or the use of this manual in operating the equipment, or in connection with the performance of the equipment when so operated.

Registering *i*-pen Mouse

Mail - Fill out and send in the registration card enclosed in your shipment.

Online - Go to <http://www.fingersystemusa.com/registration/>

Contents

Description	1
Shipment Contents	1
Features	1
Specifications	1
Bundled Softwares	1
Documentation Set	1
System Requirements	2
Installing <i>i</i>-pen Mouse Driver and Softwares	2
Installing <i>i</i> -pen Mouse Driver, Web Memo™, and Finger White™	2
Microsoft® Windows 98 Second Edition	3
Installing ritePen™ and riteMail®	7
Using <i>i</i>-pen Mouse	7
Helpful Tips on Using <i>i</i> -pen Mouse	7
Optical Character Recognition	8
<i>i</i> -pen Mouse Pad	8
Using <i>i</i>-pen Control Center	9
Speed	10
Double Click	10
<i>i</i> -pen Info	10
Using Web Memo™	11
Required Environments	11
Internet Explorer Window Using Web Memo™	11
Tool Selection Pallet	12
Using Finger White™	13
Finger White™ Window	13
Finger White™ System Tray Icon	13
Tool Selection Pallet	14
Using ritePen™ (Applicable for English only)	15
System Requirements	15
ritePen™ Window	15
ritePen™ System Tray Icon	15
ritePen™ Settings	16
ritePen™ Toolbar	16
Using riteMail®	17
System Requirements	17
riteMail® Window	17
How to Use riteMail®	17
riteMail® Toolbars	20
Troubleshooting	24
Contact and Support	25

Installing ritePen™ and riteMail®

You can use ritePen™ to convert your handwriting input to text. Using the *i-pen* Mouse, write a letter and ritePen™ will convert your handwriting into computer text with the best recognition accuracy available. Now, you can WRITE an e-mail instead of typing, especially if you don't know how to type or you're just slow at typing.

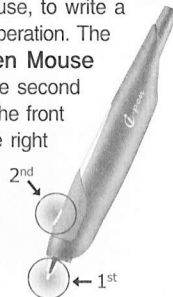
Also, using riteMail®, you can write, type, and draw the message and send it via e-mail with ease. Write your e-mail with freedom and don't get limited to what your e-mail software provides you.

Please follow the instructions below to install ritePen™ and riteMail®:

1. On your desktop, double-click to open **My Computer**
2. Right-click on the drive containing the Driver and Software CD (you'll see the *i-pen* logo) and click on **Open** when the pop-up menu shows up.
3. Double-click the ritePen™ icon to start the installation process for ritePen™ and follow the on-screen instructions.
4. When ritePen™ installation is complete, double-click on the riteMail® icon to start the installation process for riteMail®.

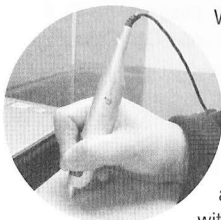
Using *i-pen* Mouse

i-pen Mouse is used for operating your PC like a mouse, to write a memo and to draw. *i-pen* Mouse has two buttons for operation. The first button (also called a pen-tip button) is the pen tip of *i-pen* Mouse and its function is same as the left button of a mouse. The second button (also called a push button) is the button located on the front top of the *i-pen* Mouse and its function is same as the right button of a mouse.



Helpful Tips on Using *i-pen* Mouse

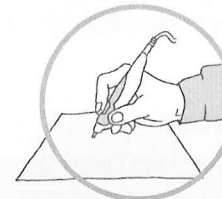
▶ Good Posture of holding *i-pen* Mouse



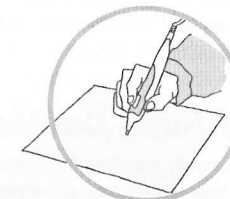
When you use a ball-point pen, you can write a letter on a paper irrespective of the posture of holding it. Contrarily, if you hold a fountain pen and rotate its pen tip to an upright position, you cannot write a letter at all, because the pen tip of a fountain pen has different structure from that of a ball-point pen. Similarly, the performance of *i-pen* Mouse greatly depends on the posture of holding it as that of a fountain pen does. As a result, when you try to write a memo or draw a simple graph with *i-pen* Mouse, the bad posture of holding it may result in

unexpected output such as rotated letters, tilted axis and so on. Therefore, you should be careful when holding the *i-pen* Mouse.

A good posture of holding the *i-pen* Mouse is shown in the figures below. The forepart, where the push button is attached, should face the front.

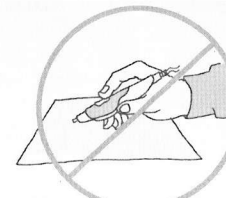


Front View

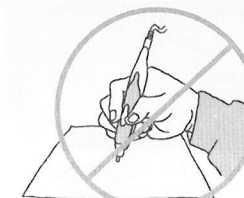


Side View

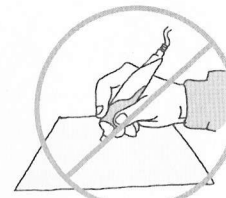
If the angle of *i-pen* Mouse and the surface is too low as shown in the figure (a), or if its forepart does not look to the front as shown in the figure (b), (c), and (d), it will not work very well.



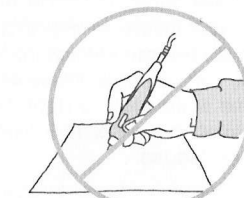
(a)



(b)



(c)



(d)

Optical Character Recognition (OCR)

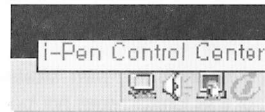
You can use *ritePen*™'s OCR function to convert your handwriting into a computer text. OCR function allows you to input your handwriting and convert it to a computer text. Now you can write long document and e-mail using *i-pen Mouse* like a pen with ease. Perfect for those who don't know how to type or those who are just too slow to type that long message.

i-pen Mouse Pad

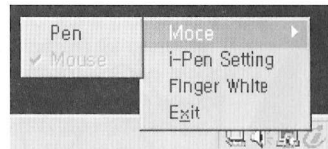
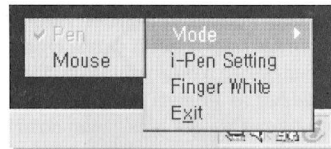
While *i-pen Mouse* works well on almost any surface except for a glass plate and white paper, it is recommended that you use *i-pen Mouse* on a mouse pad provided for smoother surface.

Using *i-pen Control Center*

After successfully installing the *i-pen Mouse* driver, *i-pen Control Center* icon will appear on your system tray as shown below.

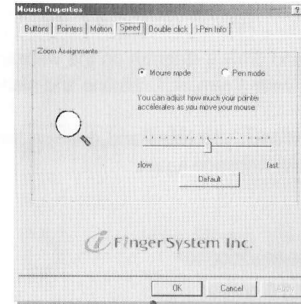
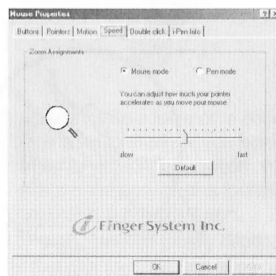
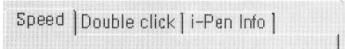


You can switch between a mouse mode and a pen mode by clicking on the *i-pen* logo as shown below.



Select *i-pen Setting* to change more options for your *i-pen Mouse*.

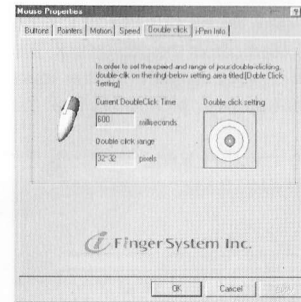
When you have successfully installed *i-pen Mouse* driver, three additional tabs will appear on your mouse settings properties. You can toggle between a Mouse mode and a Pen mode. You can adjust the sensitivity by moving the scales left to right. Set the sensitivity to which you feel most comfortable using *i-pen Mouse*.



Speed

You can use *i-pen Mouse* as a "Mouse" by setting the acceleration faster on a Mouse mode. The default acceleration setting is at 50. You can adjust the acceleration to which you feel most comfortable with.

When "Pen" mode is selected, a different acceleration scale will show. You can set a different acceleration speed for Mouse mode and Pen mode. This will help you use *i-pen Mouse* better for drawing or writing. The default acceleration setting is at 50. The recommended value of Pen mode is below 50, and higher value for *Mouse* mode.

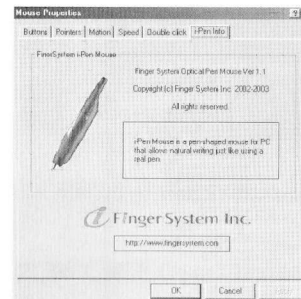


Double Click

This setting allows you to adjust the double clicking action using the *i-pen Mouse*.

Move your cursor to the target diagram and click twice. The value in a small dialog box will change. The upper one shows you the interval between your first click and second click. The small box below will show the range between two clicks.

It will be helpful to have several clicks on the target diagram. The double click time and range values will appear accordingly. Choose the best settings for you.



i-pen Info

An overview of *i-pen Mouse* and manufacturer information is shown here.

Using Web Memo™

Using the Web Memo™ you can write a note and draw a diagram on the website like a paper. Highlight your favorite sports page, write a remark, underline and mark an error.

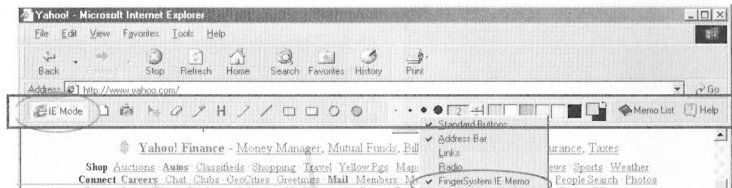
Even if you surf to other webpage, all the information you wrote and drew on the webpage will reappear when you access the same webpage again.

Required Environments

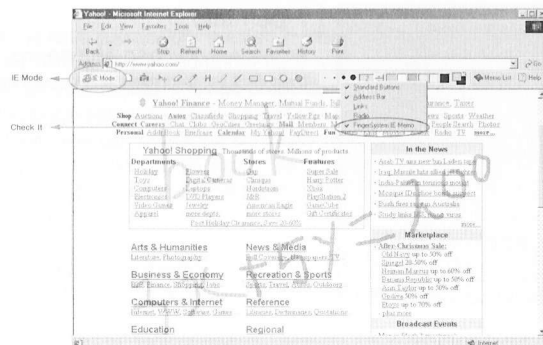
- **Operating System** : Microsoft® Windows 98/Me/2000/XP
- **Web Browser** : Microsoft® Internet Explorer 5.5 or later

To use the Web Memo™, open Internet Explorer. If Web Memo™ is installed correctly, its toolbar should be displayed below the address bar.

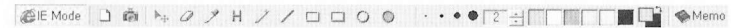
NOTE : If the toolbar is not shown, place the cursor on the empty space of the toolbar of Internet Explorer window and click the push button of *i-pen Mouse* once, then check *FingerSystem IE Memo* from the pop-up box. The long toolbar will appear at the top of Internet Explorer as shown in the figure below. If the Web Memo™ toolbar does not appear, please reinstall the software and reboot your computer.



Internet Explorer Window Using Web Memo™



Tool Selection Palette



IE Mode : To allow normal web browsing capability, have this box pressed. To use the Web Memo™ function again, choose the tool of your choice from the toolbar.

New Memo : All of the memos written on the current webpage will be erased by clicking this button.

Capture : You can save a portion of the current webpage you want into a HTML format. Once saved, you can retrieve the file later at your choice.

Select : Both the memos and drawings written on the web page are treated as an object. If you want to move an object to the different position, just click and drag the object.

Erase : You can erase a single object with a click. Place your cursor over the object you want to erase and click on it.

Color Picker : You can use this tool to select the color of a point you click on. Use this tool if you want to select a color that's on a webpage.

Highlight : If you click this button in the Web Browser mode after selecting a portion of the text area, its background color will be changed to the pre-specified color and be highlighted.

Drawing Tools : After you select a tool from the drawing tools, you can draw the object on the webpage freely.

Marking Pen **Line** **Rectangle**

Filled Rectangle **Ellipse** **Filled Ellipse**

Pen Thickness : Change the line thickness of an object to be written.

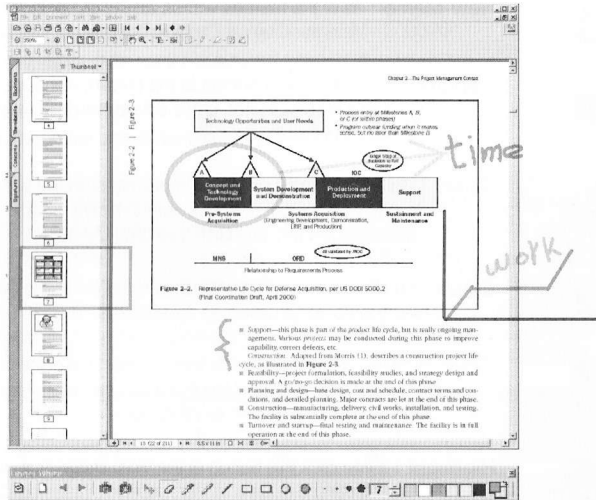
Color : You can select the color of an object to be written.

Memo List : This shows the list of webpage that you've written on. You can select from the list to bring up that webpage.

Using Finger White™

Using Finger White™ you can write notes, draw, mark and underline corrections on almost anything that shows on your screen. Leave a short note or a schedule on your computer's desktop, leave a mark or a comment on a presentation, and any writing you would want to leave on the screen.

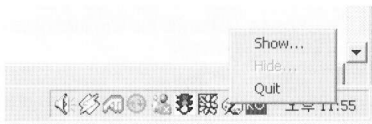
Finger White™ Window



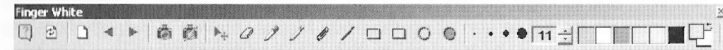
Finger White™ System Tray Icon










When Finger White™ is running, you'll see an icon on the system tray.

NOTE : If the marking doesn't stay on after you've written a memo or drawing, please click on the Finger White™ icon on the system tray and select **Show...** to activate Finger White™ on the active screen as shown below. Select **Quit** to close Finger White™.







Tool Selection Palette



-  **Help** : Click this button when you need help on using Finger White™.
-  **Reload** : When memo window is behind other window or if you want to redraw the memo, press this button.
-  **New Page** : Delete all memo on current page.
-  **Previous/Next** : Go to previous or next slide when used on Microsoft® PowerPoint.
-  **Capture Screen** : Save selected area on current screen to image.
-  **Save Screen** : Save full area on the current screen to image. (image only)
-  **Select Object** : You can select an object and move it to a different location.
-  **Erase** : You can erase a single object by clicking on the object.
-  **Color Picker** : You can click on the spot you want to pick the color of.

Drawing Tools : After you select a tool from the drawing tools, you can draw the object on the screen freely.

-  **Marking Pen**  **Line**  **Rectangle**
-  **Filled Rectangle**  **Ellipse**  **Filled Ellipse**

 **Pen Thickness** : Change the line thickness of an object to be written.

 **Color** : You can select the color of an object to be written.

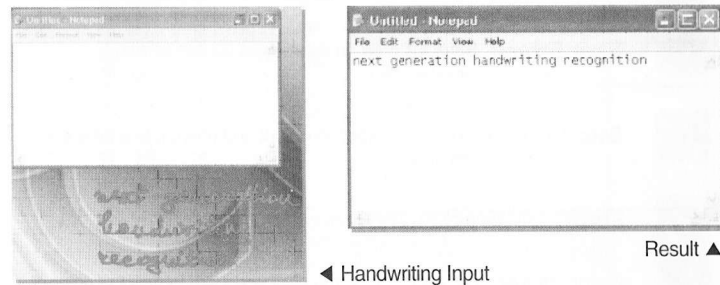
Using ritePen™ (Applicable for English only)

ritePen™ is a next-generation handwriting recognition tool. With ritePen™, users can write on the full screen using the i-pen Mouse. ritePen™ instantly converts English language handwriting into text and enters the text into any Windows application, such as Microsoft® Word, Word Pad, Notepad, Excel, Outlook, File Manager, Internet Explorer, etc.

System Requirements

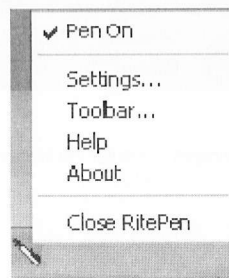
- **Processor** : At least a Pentium 400MHz or equivalent
- **Memory** : 64MB RAM or more
- **Display** : SVGA (800 x 600) or better
- **Input Device** : i-pen Mouse
- **Operating System** : Microsoft® Windows 98/Me/2000/XP

ritePen™ Window



ritePen™ System Tray Icon

When ritePen™ is launched, you'll see an icon on the system tray. Tap and hold ritePen™ icon to open the Menu. Menu items are self-explanatory. *Pen On* is checked when ritePen™ is enabled and unchecked otherwise.



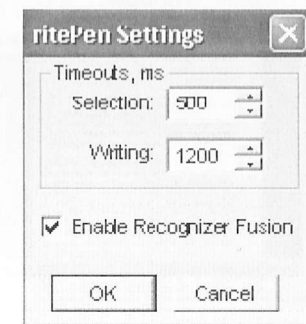
ritePen™ Settings

You can change timeouts for text selection and writing in this dialog box.

Timeout for Selection : When you select a portion of text by pressing and dragging your pen across the selection, ritePen™ briefly draws an ink stroke. By changing timeout for selection, you shorten the time this stroke appears on the screen.

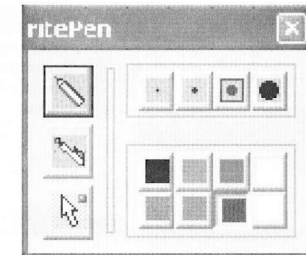
Timeout for Writing : When you are entering text using ritePen™, the application recognizes your writing continuously. When you lift a pen after you completed a portion of writing and want the text to appear in the target application, ritePen™ waits for a short while to give you the opportunity to put dots over 'l's or cross your 't' s. In order to speed up the recognition process, you may shorten this time, which is set at the experimental comfort level of 1200ms. In case you set this timeout at a lower level, you need to make sure that the timeout is sufficient for you to put the dots/crosses/diacritic signs when they are present in the handwritten text.

Enable Recognizer Fusion : Not Applicable for i-pen Mouse.



ritePen™ Toolbar

You can change pen style, width and color using ritePen™ Toolbar. Pressing the arrow in the ritePen™ toolbar disables the writing capability and is equivalent to tapping the ritePen™ icon in the taskbar.



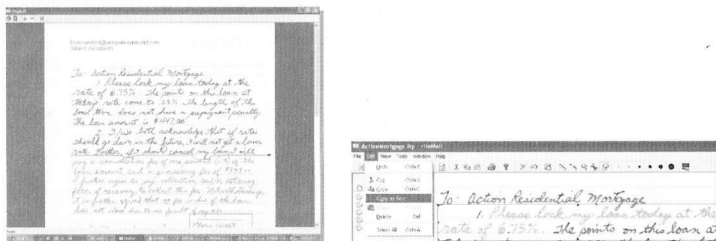
Using riteMail[®]

riteMail[™] is the first unified note taking application that enables users to take handwritten notes on **i-pen Mouse**, transmit notes to any email address, and then process and recognize them on desktops.

System Requirements

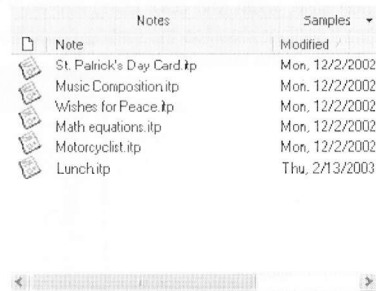
- **Processor** : At least a Pentium 400MHz or equivalent
- **Memory** : 128MB RAM or more
- **Display** : SVGA (800 x 600) or better
- **Input Device** : i-pen Mouse
- **Operating System** : Microsoft[®] Windows 98/Me/2000/XP
- **Internet Connection** : TCP/IP
- **Web Browser** : Microsoft[®] Internet Explorer 5.5 or later
- **E-Mail** : Your regular desktop e-mail application (Outlook, Eudora, etc.)

riteMail[®] Window

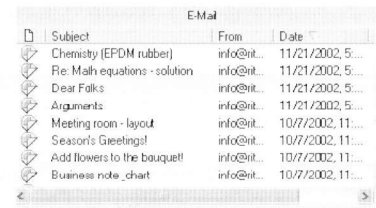


How to Use riteMail[®]

1. **Opening Files** : Open a riteMail[®] notes file (.itp file) from the *Notes File List*.



Or open a handwritten message somebody has sent you from a *Mail Folder*.

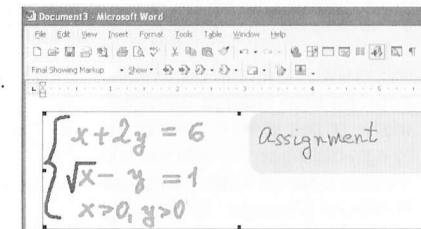


Right click on the "Notes" or "E-mail" bar to open a pop-up menu with *Notes Folder Setup* or *Mail Setup*, and *Field Chooser*. The *Notes Folder Setup* allows you to change the default notes folder. The *Mail Setup* allows you to choose the default mail client and the delivery method for riteMail[®] messages. The *Field Chooser* helps you alter display of Notes and Mail folders by adding or deleting fields.

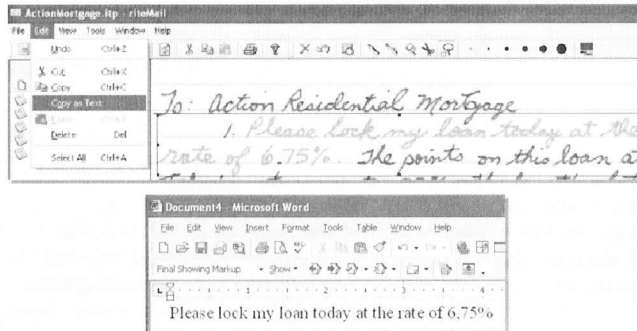
2. **Selecting Ink** : Select a portion of electronic ink by clicking the *Selector* button and either encircling, clicking, or crossing strokes. To select additional portions (including non-contiguous portions) hold the *Shift* key. To unselect a portion, hold the *Alt* key. The selected portion appears in a "faded" color as shown below.




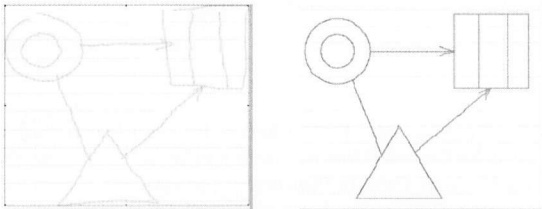
3. **Copying/Pasting Ink** : Press Ctrl-C or the *Copy* button to save the selected ink to the *Clipboard*. You can paste it to the same or a new riteMail[®] note or to Microsoft[®] Word, Excel or PowerPoint. To paste the ink from the *Clipboard*, Press Ctrl-V or the *Paste* button. In the Microsoft[®] Office documents, you can also select "Edit > Paste Special" to choose between pasting the ink as a bitmap or as an editable vector object (enhanced metafile).



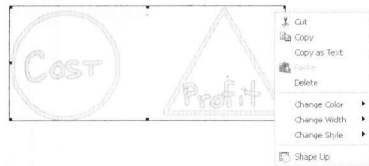
4. Recognizing text : With handwritten text selected, choose "Edit > Copy as Text" to recognize handwriting using riteScript™ technology, and save the results to the Clipboard.





5. Recognizing Shapes and Charts : With *Shapes* or *Charts* selected, press the riteShape™ button  (or right-click on the selection and choose *Shape Up*) to perfect shapes on the spot. You can later copy and paste recognized shapes and charts into office documents as explained in 3 and 4 previously. Alternatively, you can click the riteShape™ button at any time and draw shapes or charts that will be instantly perfected. Don't forget to click on the riteShape™ button again to disable shape recognition when you return to writing and freehand drawing.

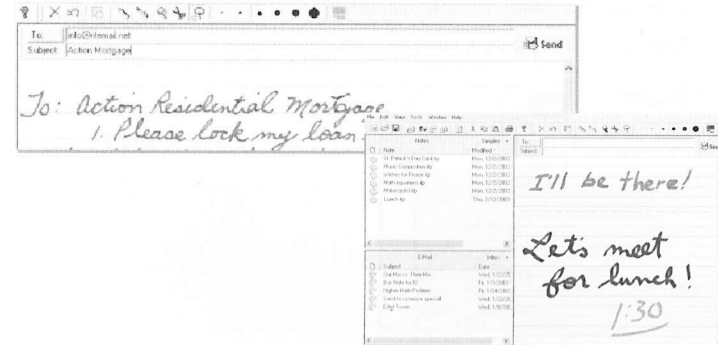


6. Changing Ink Color/Style : You can *resize*, *drag*, and *cut-copy-paste* selected ink within a riteMail® document or between documents. You can also change *ink color*, *widths*, or *pen styles* in selected ink by right-clicking on the selection and choosing *Change Color*, *Change Width*, or *Change Style* or by clicking on the appropriate buttons on the Toolbar.

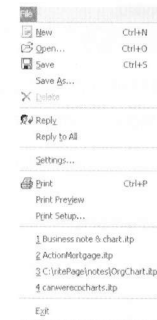


7. E-mailing Notes : Before e-mailing a handwritten note, you must be registered with the riteMail® service and complete the user info at "Tools > Options > User".

To send a message, click the **Send** icon , enter the *To* and *Subject* information, and press the **Send** button  to the right.

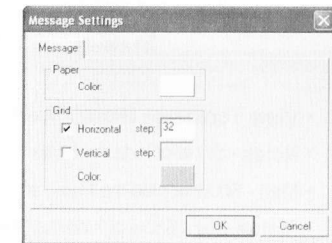


Toolbars
File Menu



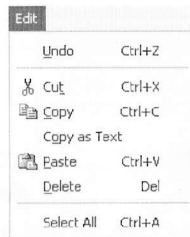
- **New** - Create a new document.
- **Open** - Open an existing document.
- **Save** - Save the active document.
- **Save As** - Save with a new file name.
- **Delete** - Delete the current document.
- **Reply** - Reply to the sender for the current document.
- **Reply to All** - Reply to sender and all recipients of the current document.

• **Settings** - Change paper and grid color and turn horizontal and vertical grid lines on and off, as seen in this dialog box :



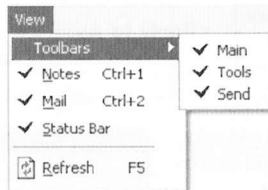
- **Print** - Print the current document using "Smart Print" feature that intelligently determines where to place uneven page breaks.
- **Preview** - Preview the current document, showing the "Smart Print" page breaks, and allowing user manipulation of those page breaks.
- **Print Setup** - Change the printer and printing options for the current document.
- **File History** - Select and open recent files.
- **Exit** - Quit this application; prompts to save documents.

Edit Menu



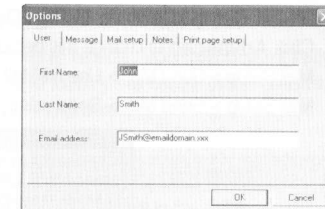
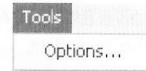
- **Undo** - Undo the last action.
- **Cut** - Cut the selection and put it on the clipboard.
- **Copy** - Copy the selection and put it on the clipboard.
- **Copy as Text** - Copy the selection as recognized text rather than as electronic ink.
- **Paste** - Insert electronic ink copied to the clipboard from the current file or another riteMail® file.
- **Delete** - Delete the selection.
- **Select All** - Select all content of the active document.

View Menu

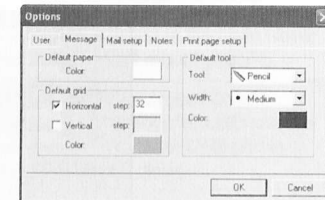


- **View Toolbars** - Show or hide the Main, Tools, and Send toolbars.
- **Notes** - Show or hide the Notes List.
- **Mail** - Show or hide the Mail List.
- **Status Bar** - Show or hide the Status Bar at the bottom of the screen.
- **Refresh** - Redraw the Notes and Mail file lists.

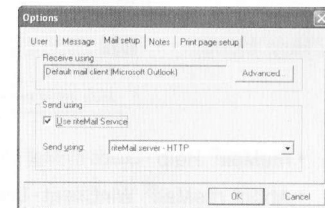
Tools Menu



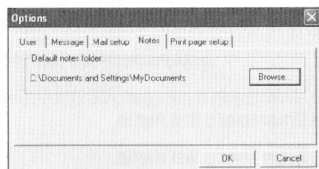
- **User > First Name** - Enter user's first name.
- **User > Last Name** - Enter user's last name.
- **User > Email Address** - Enter email address in this format : <user>@<domain>



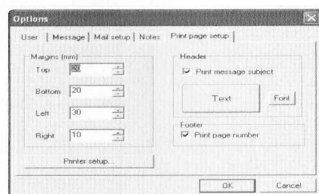
- **Message > Default Paper Color** - Select the default background paper color from the color palette.
- **Message > Default Grid > Horizontal** - Change the horizontal grid default : Check to view, uncheck to hide horizontal grid, and select grid separation distance.
- **Message > Default Grid > Vertical** - Change the vertical grid default : Check to view, uncheck to hide vertical grid, and select grid separation distance.
- **Message > Default Grid > Color** - Select the default grid color from the color palette.
- **Message > Default Tool > Tool** - Select the tool to be active by default : Pencil, Pen, Whiter, Cutter tool, or Selector.
- **Message > Default Tool > Width** - Select the default pen width from the pull-down menu.
- **Message > Default Tool > Color** - Select the default pen color from the color palette.



- Mail Setup > Receive Using > Default mail client (Microsoft® Outlook) - Click **Advanced** to change this default to another mail client.
- Mail Setup > Send Mail > Use riteMail Service - Check to use the riteMail® service.
- Mail Setup > Send Mail > Send using - Enter name of the mail server for your computer.



- Notes > Default Notes Folder - Click Browse... to change this default.



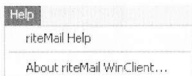
- Margins > Top, Bottom, Left, Right - Scroll or enter a number to change this default.
- Header > Print message subject - Check to print the subject of the message as a header
- Header > Text Font - Click to change the header font.
- Footer > Print page number - Check to print the message page number as a footer.
- Printer setup... - Click to change the Printer properties, paper size and source, and orientation.

Window Menu



- New Window - Opens another instance of riteMail® for Windows, displaying a blank message.

Help Menu



- riteMail® Help - Loads riteMail® for Windows Quick Start Guide.
- About riteMail® WinClient - Displays riteMail® for Windows version number and copyright information.

Troubleshooting

Although *i-pen Mouse* is designed to be highly reliable, you may occasionally experience a problem. The following helps you to identify the cause of the possible problems and suggest some solutions related to the problem.

Symptom	Cause	Solution
<i>i-pen Mouse</i> cursor is not moving.	USB cable is not properly connected to the USB port.	Unplug the USB connection and plug it again properly.
	Something is wrong with your USB port.	Plug in another USB device into the USB port and test if it works.
	<i>i-pen Mouse</i> Driver is not installed correctly.	Reinstall the <i>i-pen</i> Driver and reboot your PC.
<i>i-pen Mouse</i> cursor moves but the clicking function is not working.	USB is not enabled or the driver is corrupted or deleted.	Check your CMOS settings for USB and the driver for USB port in Windows.
	There is a problem with the USB connection.	Check the USB connection and plug in the USB connector again.
<i>i-pen Mouse</i> sensitivity is too high.	The pen tip of <i>i-pen Mouse</i> may be damaged.	Replace the pen tip with a spare pen tip provided with the <i>i-pen Mouse</i> package.
	The acceleration level for <i>i-pen Mouse</i> is set too high.	Go to the <i>i-pen</i> Settings and set the acceleration level to which you feel most comfortable with.
<i>i-pen Mouse</i> is not writing or drawing as I want it to.	<i>i-pen Mouse</i> is not operating on a flat smooth surface or its provided <i>i-pen Mouse</i> pad.	Use the <i>i-pen Mouse</i> on a pad provided with the <i>i-pen Mouse</i> package for the best result.